



**V40 CROSS  
COUNTRY**

## **QUICK GUIDE** WEB EDITION



### WELCOME TO YOUR NEW VOLVO!

Getting to know your new car is an exciting experience.

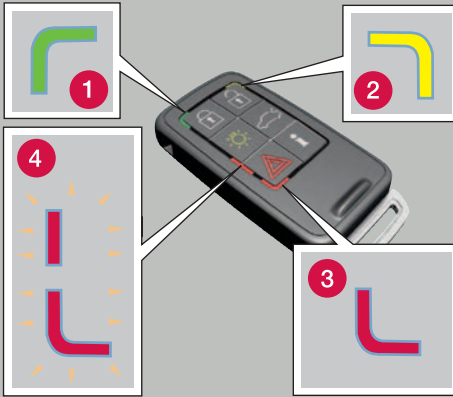
Take a look at this Quick Guide to learn some of the most common functions quickly and easily.

All warning texts, and other important and detailed information, are only available in the owner's manual – this folder only contains a small selection.

In addition, the owner's manual contains the latest and most current information.

Options are marked with an asterisk (\*).

There is further information concerning your car at [www.volvocars.com](http://www.volvocars.com).



**PCC\***

- 1 Green light: The car is locked.
- 2 Yellow light: The car is unlocked.
- 3 Red light: The alarm has been triggered.
- 4 Flashing alternating red light: Alarm triggered less than 5 minutes ago.

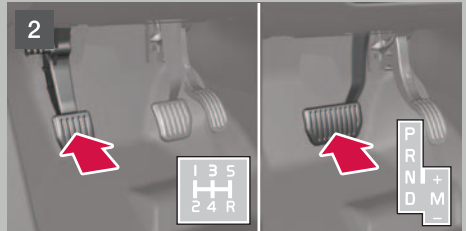
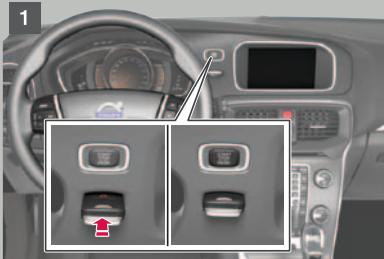
- Locks<sup>A</sup> doors and tailgate and arms the alarm\*.
- Unlocks the doors<sup>B</sup> and tailgate and disarms the alarm.
- Unlocks the tailgate – this does not open.<sup>C</sup>
- Approach light duration. Switches on the lamps in the side mirrors\*, the direction indicators and parking lamps, at the number plate, passenger compartment and floor.
- Panic function. Press and hold for approx. 5 seconds in an emergency to trigger the alarm. (Switch off with a double press on the same button.)
- Information on the car can be obtained within a radius of 100 metres.  
– Press the button and wait 7 seconds. Pressing the button out of range shows the last status stored in the memory.

<sup>A</sup> Personal seat and mirror settings are stored during locking.

<sup>B</sup> Automatic relocking takes place if a door/tailgate has not been opened within 2 minutes after unlocking.

<sup>C</sup> Power tailgate is disarmed, unlocked and opened by a few cm.

**START THE ENGINE**



- 1 Insert the remote control key in the ignition switch and push in the key to its end position.

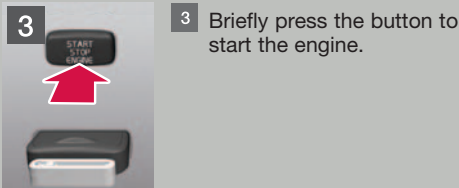
- 2 Depress the clutch or brake pedal.

**COLD START**

**NOTE**

After a cold start the idling speed is high irrespective of outside temperature. A period of raised idling speed is part of Volvo's efficient emissions system.

During cold starting, certain diesel engines may have a delayed start due to preheating.



- 3 Briefly press the button to start the engine.

## SWITCH OFF THE ENGINE AND REMOVE THE REMOTE CONTROL KEY



- 1 Briefly press the button – the engine stops.
- 2 Pull the remote control key out from the ignition switch.

## BLIS\* (BLIND SPOT INFORMATION SYSTEM)



**BLIS** is designed for driving in dense traffic and warns about vehicles in the blind spot and rapidly approaching vehicles in the left and right-hand lanes. When **BLIS** detects a vehicle the door panel's **BLIS** lamp illuminates with a constant glow. If the driver activates the direction indicator on the side the warning is given then the lamp will change over from constant glow to flashing.

See the owner's manual, sections "**BLIS\***" and "**CTA**" for more information.

## KEY POSITIONS



In order to reach the following key positions without the engine starting: Do **not** depress the brake/clutch pedal.

**0** Unlock the car.

**I** With the remote control key fully inserted into the ignition switch: Briefly press **START/STOP ENGINE**.

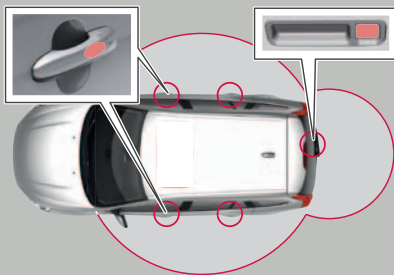
**II** With the remote control key fully inserted into the ignition switch: Press **START/STOP ENGINE** for about 2 seconds.

Key position **II** consumes a lot of current from the battery and should therefore be avoided!

See also the table in the section "**Key positions**" in the normal owner's manual for the car for information on the functions/systems that can be used with the engine switched off in different key positions.

To return to key position **0** from position **II** and **I**: Briefly press **START/STOP ENGINE**.

## KEYLESS\* KEY SYSTEM



### START THE ENGINE

- Depress the brake/clutch pedal and briefly press the **START/STOP ENGINE** button.

### SWITCH OFF THE ENGINE

- Briefly press the **START/STOP ENGINE** button.

See the owner's manual, section "**Locks and alarm**", for more information.

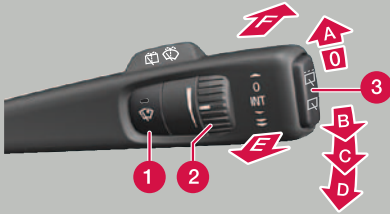
The key can remain in a pocket, for example, the whole time.

### LOCK & ARM THE CAR ALARM

- Touch the rear section of one of the outer door handles (see illustration) or press lightly on the smaller of the tailgate's two rubberised buttons.

### UNLOCK & DISARM THE ALARM

- Grip a door handle and open the door in the usual way (a glove may prevent the function) or press lightly on the larger of the tailgate's two rubberised buttons.



- 1 Rain sensor On/Off, with the lever in position 0.
- 2 Regulates the sensor sensitivity or the intermittent delay.
- 3 Wiper, rear window - intermittent/normal.

<b>A</b>	Single sweep
<b>0</b>	Off
<b>B</b>	Intermittent wiper, see also (2)
<b>C</b>	Normal sweep speed
<b>D</b>	High sweep speed
<b>E</b>	Washer, windscreen and headlamps
<b>F</b>	Washer, rear window
	Shown in the display when the rain sensor is active

ADJUSTING THE FRONT SEAT



- 1 Lumbar support
- 2 Backrest rake.
- 3 Memory buttons, power seat\*.
- 4 Store settings, power seat\*.
- 5 Raise/lower the front of the seat cushion.
- 6 Forwards/backwards.
- 7 Raise/lower seat.
- 8 Lowering the passenger seat backrest.

REMOTE CONTROL KEY AND POWER DRIVER'S SEAT\*

All remote control keys can be used by different drivers to store the settings for the driver's seat. The function must be activated in the **MY CAR** menu system under **Settings -> Car settings -> Car key memory**.

Proceed as follows:

- Adjust the seat as you want it.
- Lock the car by pressing the lock button on the remote control key that you normally use. This stores the seat's position in the remote control key's memory<sup>A</sup>.
- Unlock the car (by pressing the unlock button on the **same** remote control key) and open the driver's door. The driver's seat will automatically adopt the position that is stored in the remote control key's memory (if the seat has been moved since you locked the car).

<sup>A</sup> This setting does not affect settings that have been stored (see position 4) using the power seat's\* memory function\*. See the owner's manual for more information.

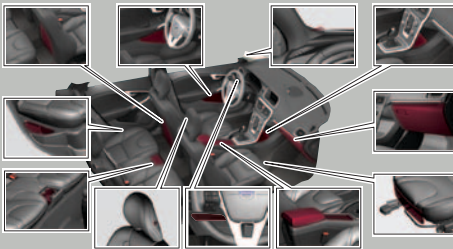
## HEADLAMP CONTROL



- A** Main beam flash
- B** Main/dipped beam switching and Home safe light duration
- Display and instrument lighting, as well as ambient lighting.
- Rear fog lamp, the light only illuminates on the driver's side
- 0** Automatic<sup>A</sup>/deactivated dipped beam. Main beam flash working but not fixed main beam
- Parking lamps
- Warning lamp, switching to dipped beam, tunnel detection\*, full beam with automatic activation\*, main beam flash working.
- Dipped beam. Switches off when the engine is switched off. Main beam can be activated, main beam flash working.
- Manual headlamp levelling (automatic for Xenon lights\*)
- Unlocking of tailgate

<sup>A</sup>. Certain markets.

## STORAGE SPACES, 12 V-SOCKETS & USB\*/AUX



The 12 V sockets in the passenger compartment work in key position **for II**. The 12 V socket\* in the cargo area is always active.

### **IMPORTANT**

Using the 12 V socket in the cargo area when the engine is switched off could discharge the battery.

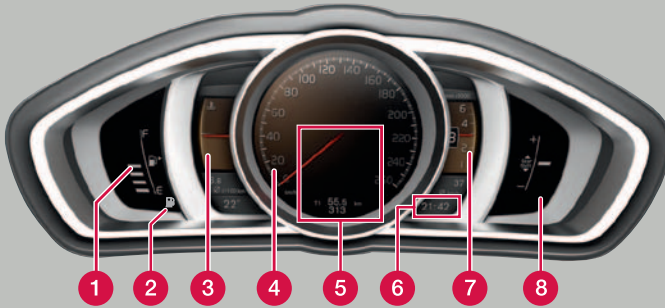
## START/STOP\*



With **Start/Stop\*** the engine can be set to stop/start automatically in stationary traffic. Illuminated button lamp indicates that the function is active.

**Manual transmission:** Stop – declutch, place the gear lever in neutral and release the clutch pedal. Start – depress the clutch pedal.

**Automatic transmission:** Stop – stop the car using the footbrake, then keep your foot on the pedal. Start – release the footbrake. This function can be disabled in the menu system.



- 1 Fuel gauge. The symbol's arrow points out the side on which the fuel cap is located.
- 2 Low fuel level. When the lamp is illuminated, fill with fuel as soon as possible.
- 3 Coolant temperature/EcoGuide<sup>^</sup>.
- 4 Speedometer.
- 5 Information on driver support system\*.
- 6 Clock. Adjusted in the **MY CAR menu system**.
- 7 Tachometer/PowerMeter<sup>^</sup>.
- 8 Gear change indicator/Gear selection indicator.
- 9 **OK** opens the trip computer's menus, activates selected option and acknowledges messages.
- 10 Thumbwheel, turn to see the trip computer's options.
- 11 **RESET**, undoes or goes back one step. Short press resets trip meter shown Long press, reset menu.



Various themes can be selected for the digital instrument cluster: Elegance, Eco or Performance.

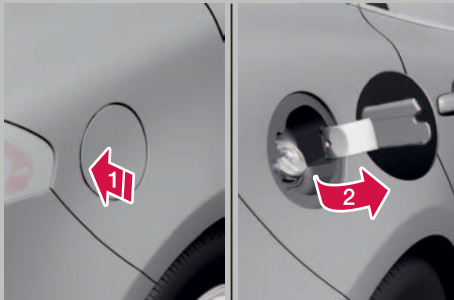
- 9 To change theme - press the left-hand stalk switch **OK** button and then select the **Themes** menu option by turning the lever's thumbwheel. Confirm by pressing the **OK** button.

**i NOTE**

Display text **\_\_\_ km to empty tank** is an estimate of the possible distance left to drive, based on earlier driving conditions.

<sup>^</sup> EcoGuide and PowerMeter are displayed only if the relevant theme is selected.

REFUELLING



- 1 With the car unlocked, open the fuel filler flap by pushing lightly on the rear part of the flap.
- 2 Pull out the flap.
- 3. Insert the pump nozzle in the fuel filler opening. Take care to insert the nozzle properly in the filler pipe.

The filler opening is designed to prevent filling the vehicle with the wrong fuel (a petrol car cannot be filled with diesel, and vice versa).

After fuelling, wait 5-8 seconds before removing the pump nozzle from the filler pipe.



### City Safety™ and Collision Warning with Auto-Brake & Pedestrian detection\*

These functions help the driver to avoid a collision in situations when changes in the traffic ahead, combined with a lapse in attention, could lead to an incident.

#### WARNING

The driver is always responsible that the vehicle is driven in a correct manner and with a safety distance adapted to the speed.

City Safety™ is a driver tool and can never replace the driver's attention to the traffic or the responsibility to drive the vehicle in a safe manner.

Pedestrian detection (detector for pedestrians in front of the car) gives no warning or brake intervention at vehicle speeds above 80 km/h and the function does not work in the dark or in tunnels.

The function cannot detect a pedestrian who:

- is partially obscured
- is shorter than 80 cm tall
- is wearing clothing that conceals the contours of the body.

The function is active at speeds below 50 km/h and helps the driver by monitoring the traffic ahead with a laser sensor fitted in the upper part of the windshield.

City Safety™ can help avoid a collision if the speed difference between your car and the vehicle in front is less than 15 km/h.

### Other driver support systems

In order to help the driver to e.g. brake in time, maintain a safe distance to other vehicles and to notice vehicles moving in the same direction as the car, in the so-called blind spot, or to maintain a suitable position on the carriageway, the car can be equipped with a number of systems:

- Adaptive cruise control (man)\*
- Adaptive cruise control with Queue Assistant (aut)\*
- Distance Alert\*
- BLIS – (Blind Spot Information System)\*
- Driver Alert Control\*
- Road Sign Information (RSI)\*
- Park Assist\*
- Lane Keeping Aid\* (LKA).

See the owner's manual, section "**Driver Support**" for more information about the functions and their limitations.

### EBA – EMERGENCY BRAKE ASSIST

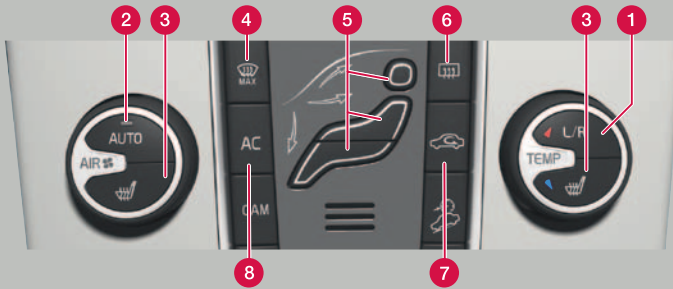
Emergency Brake Assistance helps to increase brake force and so reduce braking distance. EBA is activated when the driver brakes suddenly. When EBA is activated the brake pedal depresses a little more than usual.

– Press (hold) down the brake pedal for as long as necessary – all braking ceases if the pedal is released.

### CAR CARE

Handwashing is gentler on the paintwork than an automatic car wash. The paintwork is also more sensitive when it is new. For this reason, handwashing is recommended during the first few months with a new car.

Use clean water and a washing sponge. Remember that dirt and grit can scratch the paintwork.



### AUTOMATIC CONTROL

In AUTO mode the ECC system controls all functions automatically, making driving simpler with optimum air quality.

- 1** Press for individual temperature. Once for the left-hand side, twice for the right-hand side, three times for both sides. Turn to set the temperature. The display shows the temperature selected.
- 2** Press for automatic control of the selected temperature and other functions. Turn to adjust the fan speed.

### AIR DISTRIBUTION (models with Electronic Temperature Control - ETC - only)

Adjust the air distribution as follows to provide the best comfort in various driving conditions:

External temp.	Control
< 0°C	FLOOR or FLOOR/WIND SCREEN
0°C to +20°C	FLOOR or FLOOR/PANEL
>20°C	PANEL
Mist/frost on windows	WINDSCREEN or FLOOR/WINDSCREEN

### MANUAL CONTROL

- 3** Heating, left/right-hand seat.
- 4** **Max. defroster.** Directs all air towards the windscreen and the side windows, with maximum air flow. One press starts the air flow to the windows, two presses switches it off. **Electrically heated windscreen\*:** One press starts the windscreen, two presses starts the windscreen and directs all air towards the windscreen and side windows, three presses switches off.
- 5** Air distribution.
- 6** Electrically heated rear window and door mirrors **On/Off.**
- 7** Recirculation.
- 8** **AC** – Air conditioning **On/Off.** Cools the passenger compartment and demists the windows.

### ADJUSTING THE STEERING WHEEL



#### WARNING

Adjust the steering wheel before starting to drive – never do this while driving.

- 1** Release the catch.
- 2** Adjust.
- 3.** Lock the steering wheel