



 **Locks doors** and boot lid and arms the alarm^A.

 **Unlocks doors** and boot lid and deactivates the alarm^A.

 **Unlocks the boot lid** – this does not open.

 **Approach lighting** in side mirrors*, in the passenger compartment, at floor level and at the numberplate. Direction indicators and parking lamps come on.

 **"Panic" button.** Held down for approx. 3 seconds in an emergency to trigger the alarm.

^A Automatic relocking takes place if a door/boot lid is not opened within 2 minutes after unlocking.

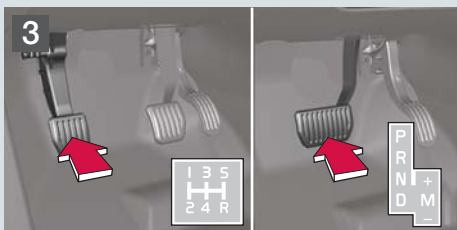
START



Insert the remote key in the ignition switch.



Press gently on the remote key, which is then pulled in.



Depress the clutch or brake pedal.



Press the **START/STOP/ENGINE** button to start the engine^B.

^B The idling speed may be slightly higher for a short time during cold starting.

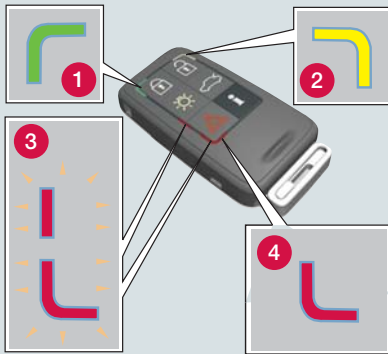
SWITCH OFF THE ENGINE AND REMOVE THE REMOTE KEY



Park the car and press the **START/STOP/ENGINE** button to switch off the engine.



Press gently on the remote key, which is then pushed out. Automatic transmission must be in position **P**.



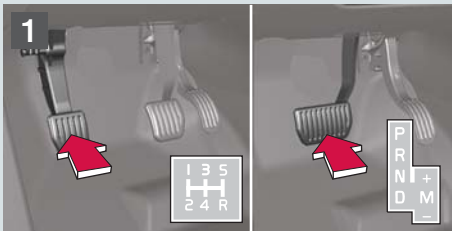
i Information on the car can be obtained within a radius of 20 m.

- Press the button and wait 7 seconds.

Pressing the button out of range shows the last status stored in the memory.

- 1 Green light:** The car is locked.
- 2 Yellow light:** The car is unlocked.
- 3 Flashing alternating red light:** Someone may be inside the car.
- 4 Red light:** The alarm has been triggered.

STARTING WITH KEYLESS DRIVE



Get into the car with the PCC in your pocket for example.

Depress the clutch or brake pedal.

^A The idling speed may be slightly higher for a short time during cold starting.



Press the **START/STOP/ENGINE** button to start the engine^A.

SWITCHING OFF THE ENGINE



Park the car and press the **START/STOP/ENGINE** button to switch off the engine

! IMPORTANT

With keyless drive the PCC only needs to be inside the car. Keep it in your pocket for example when you go to and from the car and while driving.

The car is unlocked when someone grips the outer handle of a door.

When parking the car after driving you only need to press the button on the outside of the door to lock the car.

LEATHER CARE



Leather upholstery requires regular cleaning. Treat with leather care products, 1–4 times a year or as required. Leather care products are available from your Volvo dealer.

BLIS – BLIND SPOT INFORMATION SYSTEM*



If the BLIS' indicator lamp illuminates despite there being no vehicle within the blind spot, the cause could be for example, reflection from shiny wet road surface or low sun in the camera. In the event of a direct fault in the system the display shows the text **Blind spot syst. Service required**



- 1 Press for ON/OFF**
Turn to adjust the volume
 Radio, TP, Handsfree* and RTI volume are stored individually for the next time they are used.
- 2 Select AM, FM1, FM2, CD or MODE.**
 Use MODE to activate AUX^A and to adjust the AUX audio source volume.
- 3 Set the sound pattern**
Press the button to select BASS, TREBLE, FADER, BALANCE, Dolby Pro Logic II*.
Turn the control to adjust.

^A AUX input for e.g. MP3 player (set volume at medium for optimum audio reproduction).

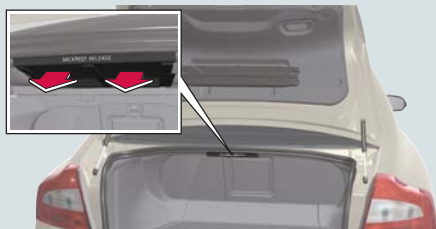
RADIO

- 3 Turn to select radio station**
- 4 Search station** with left/right arrow. Store up to 20 stations by holding in **0-9** on **FM1** and **0-9** on **FM2**. When a station has been stored it is confirmed in the display.
- 5 Autostore the 10 strongest stations**
Press in AUTO for approx. 2 seconds. Autostoring is shown in the display for as long as the search continues.
Then select 0-9 to playback one of the stored radio stations.

CD

- 4 Change CD track** using Left/Right arrow or turn (3).
Select CD disc* using Up/Down arrow.
- 6 CD eject**
Press to eject current CD disc.
Keep the button depressed to eject all CD discs in the CD changer*.
- 7 CD changer***. Select CD disc 1-6.

LOWERING THE REAR SEAT BACKRESTS



Pull the handles separately to lower the left and/or right-hand backrest.



Make sure that the rear head restraints are raised. **Lower the backrests.**



AUTOMATIC CONTROL

In **AUTO** mode the ECC system controls all functions automatically, making driving simpler with optimum air quality.

1 Temperature


Turn the controls to select the required temperature. The set temperature is shown in the display.


2 Press AUTO for automatic control of temperature and other functions.

MANUAL CONTROL


 **Fan speed**

 **Air distribution**

 **Defroster** to quickly remove misting from the windscreen and side windows.

 **Air quality system.** OFF/AUT/Recirculation.

AC Air conditioning ON/OFF

 **Heated rear window** and outer mirrors. Automatic shutdown.

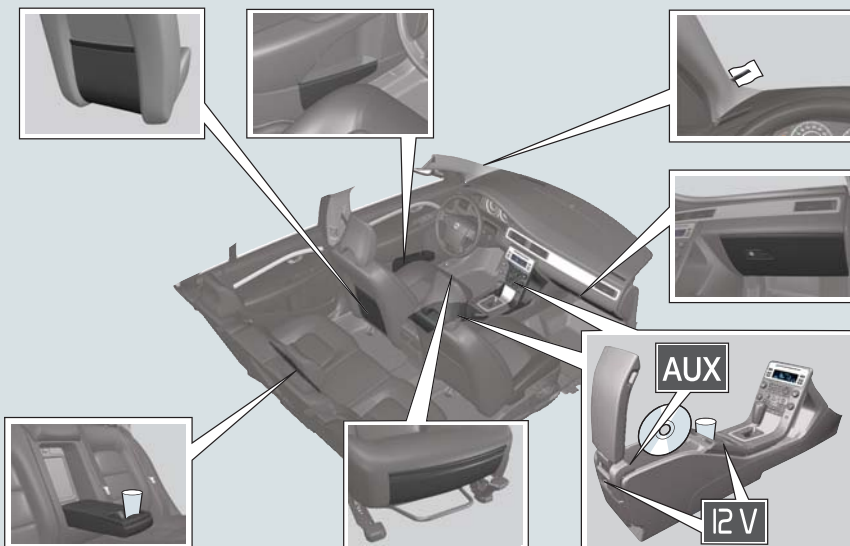
STORAGE SPACES, 12 V SOCKET AND AUX

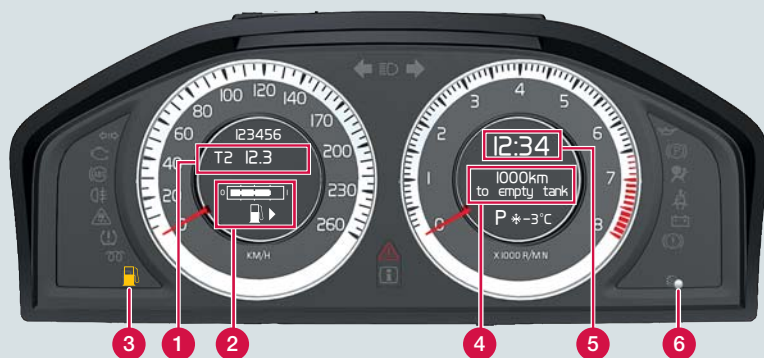


The 12 V sockets in the centre console front/rear work in ignition position I or higher. The 12 V socket on the right-hand side of the cargo area is always active.

! IMPORTANT

Using the 12 V socket in the cargo area could discharge the battery.





1 Trip meter

The car is equipped with two independent trip meters, T1 and T2, which are always on. For switching between T1/T2 and resetting, see button (6).

2 Fuel gauge

The arrow shows which side the fuel filler cap is on.

3 Low fuel level

When this symbol is illuminated, the level in the fuel tank is low. Top up with fuel as soon as possible

4 Distance to empty tank

Turn the thumbwheel of the trip computer (8) to see approximately how far is left to drive before the tank is empty.

! IMPORTANT

"Kilometres to empty tank" is an estimate of the possible distance left to drive, based on earlier driving conditions.



5 Clock

Turn the control (6) clockwise or anticlockwise to set the clock.

6 Turn to display e.g. KILOMETRES TO EMPTY TANK in the display (4).

Turn to set the clock.

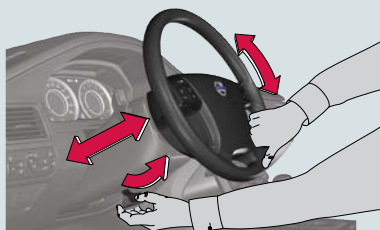
7 Press to read the messages in the display. Press again to turn off the message.

8 Trip computer

Select the required function using the thumbwheel.

9 Resets the current function in the trip computer.

ADJUSTING THE STEERING WHEEL



WARNING! Adjust the steering wheel before starting to drive – never do this while driving.

REFUELLING



Press the button to open the fuel filler flap.

HEADLAMP CONTROL



Main beam flash.
Switch between **main/dipped beam**.



Display and instrument lighting



Fog lamps (front)



Fog lamps (rear, driver's side only)



Automatic dipped beam. Main beam flash works but not fixed main beam.



Parking lamps



Dipped beam. Dipped beam switches off when the ignition is switched off. Main beam can be activated with the lever.



Headlamp levelling, dipped beam. Automatic function for Bi-Xenon® lights*.

DRIVER SUPPORT SYSTEM*



To help the driver to brake in time, for example, keep a safe distance from other vehicles or maintain a good road position, the car may be fitted with a number of systems:

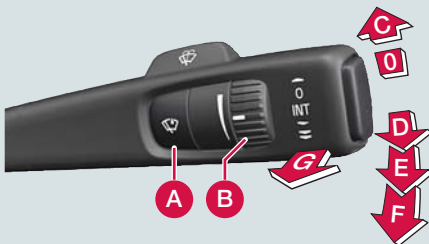
- Adaptive cruise control*
- Distance control*
- Collision warning with auto brake*
- Driver Alert System*.

BLUETOOTH*



1. Makes mobile phone searchable/visible
2. Hold down the **PHONE** button on the audio system
3. Select **Add phone** from the audio system display
4. Select the phone you want to connect
5. Input the digits shown in the audio system display using the mobile phone's keypad

RAIN SENSOR* AND WINDSCREEN WIPERS



RAIN SENSOR

- A** Press to activate the rain sensor when the lever is in position 0.
- B** Adjust **rain sensor sensitivity** by turning the thumbwheel.



Single sweep, windscreen wipers



Interval wiping. Turn the thumbwheel (B) to adjust the wiper interval.



Normal speed



High speed



Windscreen and headlamp washing



Display symbol when rain sensor is on.

KEY POSITIONS (0 & I)



The clutch/brake pedal must **not** be depressed.

REMOTE KEY

Position 0



Position I



KEYLESS DRIVE

Position I



Audio system and passenger compartment lighting operate irrespective of key position.

- 0 Instrument/clock lighting, steering lock unlocks.
- I Sunroof, window motors, fan, ECC, windscreen wipers, 12 V socket in central console, RTI

ADJUSTING THE FRONT SEAT




- 1 Lumbar support
- 2 Backrest rake
- 3 Raise/lower seat
- 4 Seat cushion front edge raise/lower
- 5 Forwards/backwards

PARKING BRAKE



To apply

- 1 Press the button.
-  The lamp flashes until the parking brake is fully applied, after which the lamp stays on.

To disengage

Key position 0 or I.
Depress the clutch or brake pedal.
2 Pull out the button.

Disengage automatically

- Select a gear and drive away.
(For cars with an automatic gearbox, the driver has to be wearing the seat belt.)