



VOLVO C70

# QUICK GUIDE

WEB EDITION



## WELCOME TO YOUR NEW VOLVO!

Getting to know your new car is an exciting experience.

Look through this Quick Guide so that you learn some of the most common functions in your new Volvo quickly and easily.

All warning texts, and other important and detailed information, are only available in the owner's manual – this folder only contains a small selection.

In addition, the owner's manual contains the latest and most current information.

Options are marked with an asterisk (\*).

There is further information concerning your car at [www.volvocars.com](http://www.volvocars.com)

## REMOTE CONTROL KEY





### KEY BLADE


Used to lock/unlock the glovebox or the driver's door/cargo area, e.g. if the car is without electrical power.





Key opening, boot lid.

 Locks the doors, storage compartments in doors\*, boot lid and ski hatch, and arms the alarm\*. After 30 seconds, the doors are double-locked and cannot be opened from the inside.

 Unlocks the doors\*, storage compartments in doors\*, boot lid and ski hatch, and disarms the alarm.

 Unlocks the boot lid – it does not open.

 Approach lighting. Switches on the lamps in the side mirrors\*, the direction indicators and parking lamps, at the number plate, passenger compartment and floor.

 "Panic" button. Held depressed for approx. 3 seconds in an emergency in order to trigger the alarm.

<sup>A</sup> Automatic relocking takes place if a door/tailgate is not opened within 2 minutes after unlocking.

## COLD START



### NOTE

After a cold start the idling speed is high irrespective of the outside temperature. A period of raised idling speed is part of Volvo's efficient emissions system.

## AUTOSTART (2.4i, T5 & D5)



– Depress the clutch and/or brake and turn the remote control/ignition dial to the end position **III** and release it directly – the engine starts automatically. Diesel engines must always be preheated in key position **II** before they are started.

## DIRECTION INDICATORS



- A** Short sequence – 3 flashes.
- B** Continuous flashing sequence.

## ADJUSTING THE STEERING WHEEL



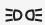








### WARNING

Adjust the steering wheel before setting off – never while driving.

## LIGHT SWITCHES



-  Manual headlamp levelling (automatic for Dual Xenon lights\*).
-  Automatic dipped beam. Main beam flash works but not the fixed main beam.
-  Parking lamps
-  Dipped beam. Switches off when the engine is switched off. Main beam can be activated.
-  Display and instrument lighting.
-  Front fog lamps
-  Fog lamp (rear, only driver's side).
-  **A** Main beam flash
-  **B** Main/dipped beam switching and Home safe lighting.

## AUTOMATIC CAR WASHES



Remove the antenna before using an automatic car wash.

Turn the antenna anticlockwise to remove it.

## STORAGE SPACES, 12 V SOCKET & AUX/USB\*

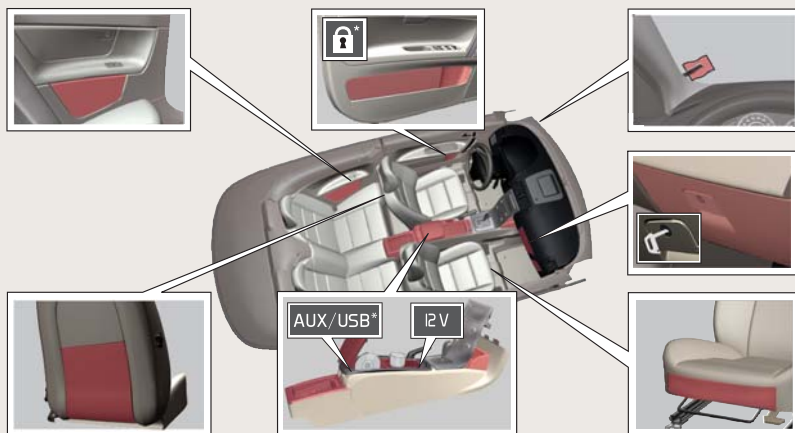


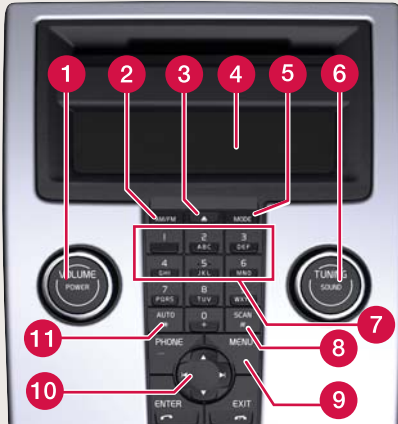
The 12 V sockets in the passenger compartment work in key position **I** or **II**. The 12 V socket\* in the cargo area is always active.

The car's audio system can playback music from an MP3 player etc. using the AUX/USB\* output.

### **IMPORTANT**

Using the 12 V socket in the cargo area when the engine is switched off could discharge the battery.





- 1 Press for On/Off. Turn to adjust the volume.
- 2 Radio **FM1**, **FM2** or **AM**.
- 4 Display
- 5 **MODE** – **CD** or **AUX**<sup>A</sup>.
- 6 Press to select sound pattern e.g. **BASS**, **Dolby Pro Logic II**<sup>\*</sup> or **SUBWOOFER**<sup>\*</sup> – turn to adjust.
- 9 **MENU** – **AUX**, volume and advanced audio settings. Activate/deactivate **SUBWOOFER**<sup>\*</sup>.

RADIO

- 6 Turn to select the station.
- 8 Searches for the next strong station.
- 10 Search for station using Left/Right arrow. Store up to 20 stations by holding in **0-9** on **FM1** or **FM2** at the desired station until the display confirms the selection.
- 11 Press for about 2 seconds to autostore the 10 strongest stations. The display shows **AUTOSTORING** during the search. Select stored station with **0-9**.

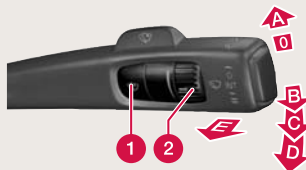
CD PLAYER

- 3 One short press ejects the current disc. One long press ejects all discs<sup>B</sup>.
- 6 Turn to change the track.
- 7 CD changer\* – select disc with 1-6.
- 10 Change CD tracks with left/right arrow. Select CD<sup>B</sup> with up/down arrow.


<sup>A</sup> AUX input for e.g. MP3 player (set volume at medium for optimum audio reproduction).

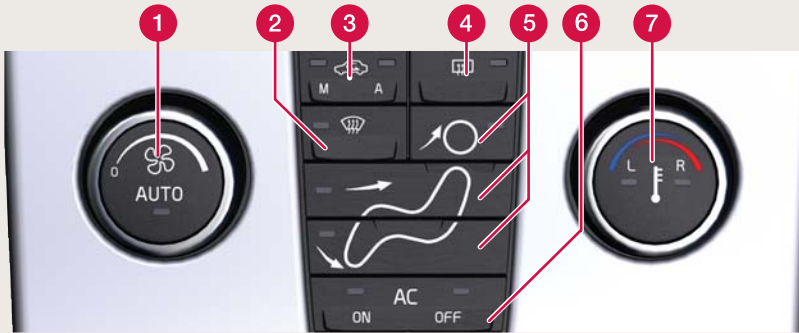
<sup>B</sup> Only CD changer\*.

WINDSCREEN WIPERS AND RAIN SENSOR\*



- 1 Rain Sensor On/Off, with the lever in position **0**.
- 2 Regulates the sensor sensitivity or the intermittent delay.

- A Single sweep
- 0 Off
- B Intermittent wiper, see also (2).
- C Normal sweep speed.
- D High sweep speed.
- E Washer, windscreen and headlamps.
-  Illuminates when the rain sensor is active.



**AUTOMATIC CONTROL**

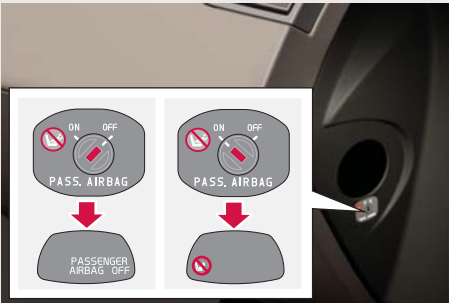
In **AUTO** mode the ECC system controls all functions automatically making driving simpler with optimum air quality.

- 1 Press for automatic control of selected temperature and other functions.
- 7 Press for individual temperature left (L) or right-hand (R) side. Turn for the desired temperature. The display shows the selected temperature.

**MANUAL CONTROL**

- 1 Turn to change the fan speed.
- 2 Defroster. Quickly removes mist on the windscreen and side windows.
- 3 **M** – Recirculation On/Off.  
**A** – Air quality system\* On/Off.
- 4 Rear window and door mirror defrosters.
- 5 Air distribution
- 6 **AC** – Air conditioning On/Off. Cools the passenger compartment and demists the windows.

**DEACTIVATING THE AIRBAG – PACOS\***



**PACOS (Passenger Airbag Cut Off Switch)**

Use the key blade to switch **ON/OFF**.

**OFF** – The airbag is deactivated.

**PASSENGER AIRBAG OFF** is shown in the warning lamp above the interior rearview mirror.

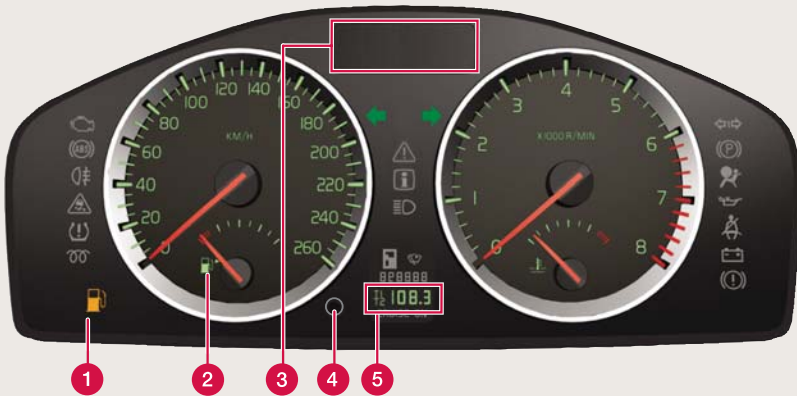
A child can sit on a booster cushion or child seat in the front seat but never passengers taller than 140 cm.

**ON** – The airbag is activated.

Passengers taller than 140 cm can sit in the front seat but never a child on a booster cushion or in a child seat.

**! WARNING**

Incorrect use could endanger life. Consult the Owner's Manual if you have the slightest doubt about its use.



- 1 Low fuel level. When the symbol is illuminated, fill up with fuel as soon as possible.
- 2 Fuel gauge. The symbol's arrow points out the side on which the fuel cap is located.
- 3 Display for trip computer, messages, clock and outside temperature.
- 4 One short press switches between T1 & T2. One long press resets the current meter.
- 5 T1 & T2 – independent trip meters, which are always on.



- 6 Press to show/clear message.
- 7 Turn to see the trip computer's options.
- 8 One short press resets the trip computer's current function. One long press resets all trip computer functions.

**i NOTE**

Display text **KILOMETRES TO EMPTY TANK** is an estimate of possible distance based on earlier driving conditions.

**BLIS – BLIND SPOT INFORMATION SYSTEM\***



If the BLIS' indicator lamp illuminates despite there being no vehicle within the blind spot, the cause could be for example, reflection from shiny wet road surface, own shadow on light road surface or low sun in the camera.

In the event of a direct fault in the system the display shows the text **BLIS SERVICE REQUIRED**.

**CAR CARE**



Washing by hand is gentler to the paintwork than an automatic car wash. The paintwork is also more sensitive when it is new. For this reason, handwashing is recommended during the first few months with a new car.

Use clean water and a washing sponge. Remember that dirt and grit can scratch the paint.

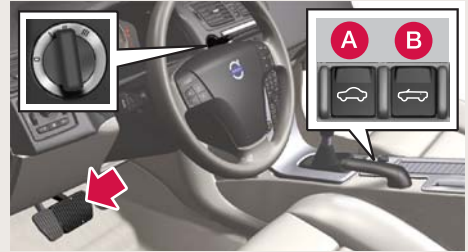


## PREPARATIONS

- No objects on parcel shelf, roof or boot lid.
- 2 m clearance and 0.2 m behind.
- Level ground.
- Outside temperature above -10 °C.
- Closed cargo separator and boot lid.
- Pay attention that no individual is close to the roof's moving parts during its operation.

The side windows lower several centimetres when the roof is operated. They then return automatically.

## OPERATION



1. The car must be stationary.
2. The engine must be running at idling speed.
3. Depress the brake pedal.
4. Press and hold button (A) or (B) until a signal sounds and the message **ROOF CLOSED/ROOF OPEN** is shown in the display.
5. Release the button.

## CARGO SEPARATOR



The cargo separator limits the cargo area to make space for the folding roof.

1. Raise the cargo separator during loading.
2. Fold down the cargo separator fully until locked (3) before lowering the roof (see the label on the cargo separator).

## LOADING ASSISTANCE



Raise/lower the lowered roof to facilitate loading.

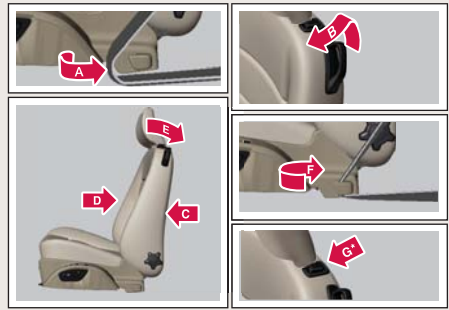
1. Hold in the button until the roof is raised.
2. Raise the cargo separator, load, and then fold it down fully.
3. Hold in the button until the roof is lowered.

## ADJUSTING THE FRONT SEAT



- 1 Lumbar support
- 2 Backrest rake.
- 3 Raise/lower seat.
- 4 Raise/lower the front edge of the seat cushion.
- 5 Forwards/backwards.
- 6 Entry to the rear seat.

## ENTRY TO THE REAR SEAT



### MANUAL SEAT

#### Move the seat forward

1. Loosen the belt from the belt guide (A).
2. Lift the handle (B) and fold the backrest forward to the locked position.
3. Push the seat forward (C).

#### Move the seat backward

1. Push the seat back to the desired position (D).
2. Lift the handle (B) and fold back the backrest.
3. Replace the belt in the belt guide (F).

### POWER SEAT\*

#### Move the seat forward

1. Loosen the belt from the belt guide (A).
2. Lift the handle (B) and fold the backrest forward to the locked position.
3. Hold the in the button's front section (G).

#### Move the seat backward

1. Hold the in the button's rear section (G).
2. Lift the handle (B) and fold back the backrest.
3. Replace the belt in the belt guide (F).

### NOTE

When putting on the seatbelt, it is easiest to take it down by the belt guide, and not over the shoulder.

## REFUELLING



1. Press to open the tank cover.
2. Hang up the fuel cap during refuelling.