



VOLVO XC60

# QUICK GUIDE

WEB EDITION



## WELCOME TO YOUR NEW VOLVO!

Getting to know your new car is an exciting experience.

Take a look at this Quick Guide to learn some of the most common functions quickly and easily.

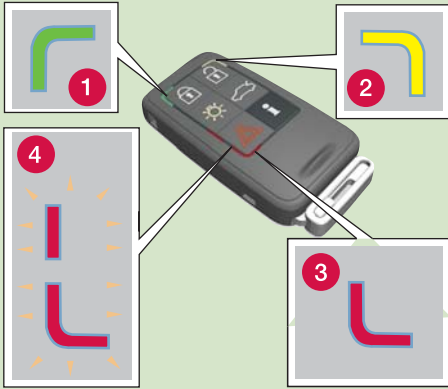
All warning texts, and other important and detailed information, are only available in the owner's manual – this folder only contains a small selection.

In addition, the owner's manual contains the latest and most current information

Options are marked with an asterisk (\*).

There is further information concerning your car at [www.volvocars.com](http://www.volvocars.com)

## REMOTE CONTROL KEY WITH PCC\* – PERSONAL CAR COMMUNICATOR



### PCC\*

- 1 Green light: The car is locked.
- 2 Yellow light: The car is unlocked.
- 3 Red light: The alarm has been triggered.
- 4 Flashing alternating red light: Alarm triggered less than 5 minutes ago.



Locks doors and the tailgate and activates the alarm\*. The lock and interior door handles are blocked after 10-25 seconds. The doors cannot then be opened from inside.



Unlocks the doors<sup>A</sup> and tailgate and disarms the alarm.



Unlocks the tailgate – this does not open.<sup>B</sup>



Approach light duration. Switches on the lamps in the side mirrors\*, the direction indicators and parking lamps, at the number plate, passenger compartment and floor.



Panic function. Held down for approx. 3 seconds in an emergency to trigger the alarm.



Information on the car can be obtained within a radius of 20 metres.

– Press the button and wait 7 seconds.

Pressing the button out of range shows the last status stored in the memory.

<sup>A</sup> Automatic relocking takes place if a door/tailgate has not been opened within 2 minutes after unlocking.

<sup>B</sup> Power tailgate opens.

## CITY SAFETY™



If the speed difference is greater then a collision cannot be avoided, but the speed of the initial impact is reduced. City Safety™ is designed to be activated as late as possible in order to avoid unnecessary interventions.



### WARNING

City Safety™ is a driver tool and can never replace the driver's attention to the traffic or the responsibility to drive the vehicle in a safe manner.

City Safety™ must never be used as a substitute for the foot brake.

City Safety™ does not work in all traffic, weather or road conditions.

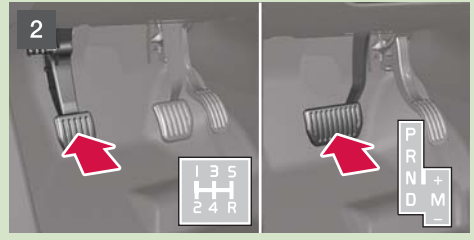
City Safety™ is intended to help a distracted driver just before a potentially imminent collision. The function is active in the speed range 4–30 km/h and helps the driver by checking the traffic in front with a laser sensor fitted on the upper part of the windscreen.

City Safety™ can help avoid a collision if the speed difference between your car and the vehicle in front is less than 15 km/h.

## START THE ENGINE



– Insert the remote control key in the ignition switch and press gently on it – the key is drawn in.



– Depress the clutch or brake pedal.



– Briefly press the button to start the engine.

## COLD START

### NOTE

After a cold start the idling speed is high irrespective of outside temperature. A period of raised idling speed is part of Volvo's efficient emissions system.

## SWITCH OFF THE ENGINE AND REMOVE THE REMOTE CONTROL KEY



1. Briefly press the button – the engine stops.
2. Briefly press the key – it can now be removed from the ignition switch (automatic transmission must be in P position).

## BLIS – BLIND SPOT INFORMATION SYSTEM\*



If the BLIS' indication lamp illuminates despite no vehicle being in the blind spot, the cause could be reflection from wet road surface or low sun shining into the camera for example.

In the event of a direct fault in the system the display shows the text  
**Blind spot syst. Service required.**

## WINDSCREEN WIPERS AND RAIN SENSOR\*



- 1 Rain sensor On/Off, with the lever in position 0.
- 2 Regulates the sensor sensitivity or the intermittent delay.
- 3 Wiper, rear window – intermittent/normal.

- |   |   |
|---|---|
| A | Single sweep                                |
| O | Off   |
| B | Intermittent wiper, see also (2).           |
| C | Normal sweep speed.                         |
| D | High sweep speed.                           |
| E | Washer, windscreen and headlamps.           |
| F | Washer, rear window.                        |
|   | Illuminates when the rain sensor is active. |

## KEY POSITIONS



To reach the key positions above without starting the engine: Do not depress the brake/clutch pedal.

- Remote control key not inserted – Audio system and passenger compartment lighting.
- 0 Remote control key inserted – Instrument/clock lighting, steering lock off.
- I Inserted key and short press on **START** – Panorama roof\*, electric windows, fan, ECC, windscreen wipers, 12 V socket, RTI\*.

To leave key mode **0/I** and thus switch of all electrical consumers: press the key to remove it from the ignition.

## AUDIO SYSTEM



- 1 Press for ON/OFF. Turn to adjust the volume.
- 2 Select **AM**, **FM1/FM2**, **CD** or **MODE**. With **MODE**, **AUX**<sup>^</sup>/**USB** can be activated and its volume adjusted.
- 3 Press to select sound pattern e.g. **BASS**, **Dolby Pro Logic II**<sup>\*</sup> or **SUBWOOFER**<sup>\*</sup> – turn to adjust.

### RADIO

- 3 Turn to select station.
- 4 Search station with left/right arrow. Store the required station by holding down one of the digit buttons **0–9** on **FM1** or **FM2** until the display confirms that the station has been stored. A total of 20 stations can be stored.
- 5 Press for about 2 seconds to autostore the 10 strongest stations. The display shows **Autostoring** during the search. Select stored station with **0–9**.

### CD PLAYER

- 3 Turn to change CD track.
- 4 Change CD tracks with left/right arrow. Select CD<sup>B</sup> with up/down arrow.
- 6 One short press ejects the current disc. One long press ejects all discs<sup>B</sup>.
- 7 Select CD<sup>B</sup> with **1–6**.

### AUX and USB\*

An iPod<sup>®</sup> <sup>c</sup> or MP3 player can be connected to the audio system via the centre console's AUX or USB connection.

### RADIO SYSTEM DAB\*

The digital broadcasting system, Digital Audio Broadcasting, offers High Quality radio and even more channels.

<sup>^</sup> AUX input for e.g. MP3 player (set volume to medium for optimum audio reproduction).

<sup>B</sup> Only CD changer\*.

<sup>c</sup> The iPod brand belongs to Apple Computer Inc.



**AUTOMATIC CONTROL**

In **AUTO** mode the ECC system controls all functions automatically, making driving simpler with optimum air quality.

- 1 Turn for the individual temperature on the left/right-hand side of the passenger compartment. The display shows the selected temperature.
- 5 Press for automatic control of selected temperature and other functions.

**MANUAL CONTROL**

- 2 Turn to change the fan speed.
- 3 Air distribution
- 4 Heating, left/right-hand seat.
- 6 Air quality system. OFF/AUT/Recirculation.
- 7 Max defroster. Directs all air towards the windscreen and side windows, with maximum air flow
- 8 Rear window and side mirror defrosters.
- 9 **AC** – Air conditioning On/Off. Cools the passenger compartment and demists the windows.

**STORAGE SPACES, 12 V SOCKET & AUX/USB\***

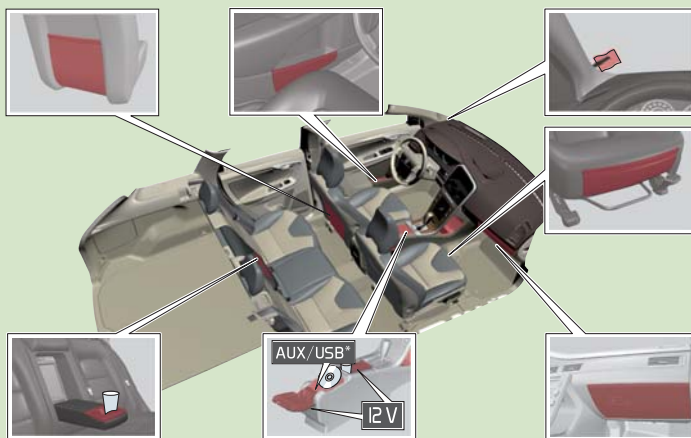


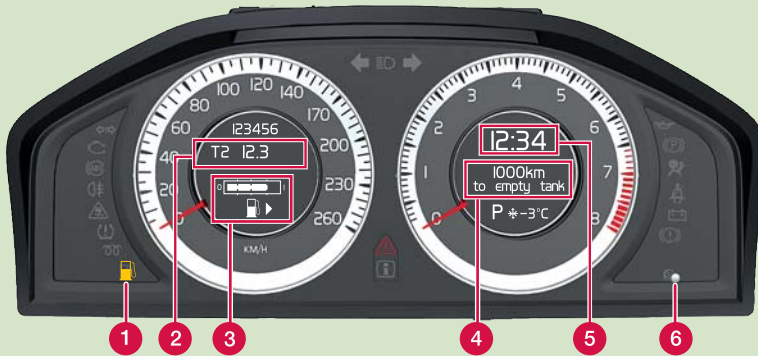
The 12 V sockets in the passenger compartment work in key position I or II. The 12 V socket\* in the cargo area is always active.

The car's audio system can playback music from an MP3 player etc. using the AUX/USB\* output.

**IMPORTANT**

Using the 12 V socket in the cargo area when the engine is switched off could discharge the battery.





- 1 Low fuel level. When the lamp is illuminated, fill with fuel as soon as possible.
- 2 T1 & T2 – independent trip meters, which are always active.
- 3 Fuel gauge. The symbol's arrow points out the side on which the fuel cap is located.
- 4 Display, trip computer. Select function with (8).
- 5 Clock. Adjust with (6).
- 6 Turn to end position and hold to set the clock.  
One short press switches between T1 & T2.  
One long press resets the current meter.
- 7 Press to show/clear message.
- 8 Turn to see the trip computer's options.
- 9 One short press resets the trip computer's current function.  
One long press resets all trip computer functions.



**NOTE**  
Display text ---- km to empty tank is an estimate of the possible distance left to drive, based on earlier driving conditions.

ADJUSTING THE STEERING WHEEL



**WARNING**  
Adjust the steering wheel before starting to drive – never do this while driving.

REDUCED ALARM LEVEL



To prevent the alarm being activated if a dog is left in a locked car, for example, or if the car is parked on a ferry or being transported by rail, the movement sensor must be disabled temporarily.

See the instruction manual, Alarm section.

## HEADLAMP CONTROL



- A** Main beam flash
- B** Main/dipped beam switching and Home safe light duration.

- Display and instrument lighting.
- Fog lamps rear (driver's side only).
- Automatic dipped beam. Main beam flash works but not fixed main beam.
- Parking lamps
- Dipped beam. Switches off when the engine is switched off. Main beam can be activated.
- Opens petrol tank cap.
- Manual headlamp levelling (automatic for Xenon lights\*).
- Unlocking of tailgate.

## DRIVER SUPPORT SYSTEM



To help the driver to brake in time, for example, keep a safe distance from other vehicles or maintain a good road position, the car may be fitted with a number of systems:

- Adaptive cruise control\*
- Distance control\*
- Collision warning with auto brake\*
- Driver Alert System\*.

## BLUETOOTH\*



1. Makes mobile phone searchable/visible.
2. Hold in the audio system's **PHONE** button.
3. Select **Add phone** from the audio system display.
4. Select the phone to be connected.
5. Input the digits shown in the audio system display using the mobile phone's keypad.

## POWER PANORAMA ROOF\*



The first press on the control operates the sun blind – the second, the panorama roof. For manual operation, the sun blind must be in

maximum open position before the roof can be operated.

In ventilation position the sun blind is opened/closed automatically.

- A** Automatic maximum opening.
- B** Manual opening.
- C** Manual closing.
- D** Automatic maximum closing.
- E** Opening ventilation position.
- F** Closing ventilation position.



## EBA – EMERGENCY BRAKE ASSIST



Emergency Brake Assistance helps to increase brake force and so reduce braking distance. EBA is activated when the driver brakes suddenly. When EBA is activated the brake pedal depresses a little more than usual.

– Press (hold) down the brake pedal for as long as necessary – all braking ceases if the pedal is released.

## CAR CARE



Handwashing is gentler on the paintwork than an automatic car wash. The paintwork is also more sensitive when it is new. For this reason, handwashing is recommended during the first few months with a new car.

Use clean water and a washing sponge. Remember that dirt and grit can scratch the paintwork.

## PARKING BRAKE



### To apply

– Press the button. The warning lamp flashes until the parking brake is fully applied – after which the lamp stays on.

### To disengage

1. Key position **0** or **I**.
2. Depress the brake pedal and pull the button gently.

### Disengage automatically

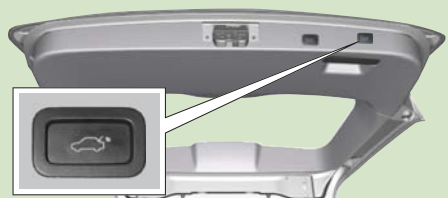
– Drive away. (For cars with automatic transmission, the seatbelt must be buckled).

## ADJUSTING THE FRONT SEAT



- 1 Lumbar support
- 2 Backrest rake.
- 3 Raise/lower seat.
- 4 Raise/lower the front of the seat cushion.
- 5 Forwards/backwards.
- 6 Lowering the passenger seat backrest.

## POWER OPERATED TAILGATE\*



### Opening

– Hold in the button for the tailgate on the lighting panel/remote control key until the tailgate starts to open.

– Or lightly press the rubberised pressure plate beneath the outside handle and raise the tailgate.

### Closing

– Press the tailgate's closing button or close manually.