



XC 90
EXCELLENCE

VÄLKOMMEN!

Here you can read about the functions for the rear seat in your Volvo XC90 Excellence. More detailed owner's information is available in the car, in the app and on the web.



THE CAR'S CENTRE DISPLAY

The owner's manual is available in the car's centre display, where it can be accessed via the top view.



MOBILE APP

The owner's manual is available as an app (Volvo Manual) for smartphones and tablets. The app also contains video tutorials for selected functions.



VOLVO'S SUPPORT SITE

The Volvo Cars support site (support.volvocars.com) contains manuals and video tutorials, as well as additional information and assistance for your Volvo and your car ownership.



PRINTED INFORMATION

There is a supplement to the owner's manual in the glovebox that contains information on fuses and specifications, as well as a summary of important and practical information. A printed owner's manual and associated supplement can be ordered.

CONTROL DISPLAY IN THE REAR SEAT

The control display is fitted in the tunnel console between the rear seats and it controls the seat functions as well as the heating and cooling of drinks.

Raising the screen

- Press the top of the screen. The screen rises automatically.

The screen starts automatically when it is raised. The light is dimmed after a certain time. Touch the screen to reactivate it.

Lowering the screen

The screen is lowered manually:

- Press the top of the screen. Press until the screen is fully lowered into the tunnel console. The screen is switched off when it is lowered.

AIR IONISER

The air ioniser contributes to improving the air quality in the passenger compartment by ionising the blown-in air, thereby supplying the passenger compartment with fresh air. The function is always active when the car is in at least ignition position I.





NAVIGATING IN THE CONTROL DISPLAY

The control display is a touch screen that reacts to touch. The display consists of different views. Tap on a button in the screen to activate the desired function or to access the view for a function.

Buttons in the home view



Button for heating the left and right-hand seat respectively.



Button for cooling/heating the cup holders.



Button for ventilating the left and right-hand seat respectively.



Button for adjusting the front passenger seat from the rear seat.

Returning to home view from another view

The control display automatically returns to the home view after a certain time. When adjusting the front passenger seat, tap on the cross to return to the home view.



ADJUSTING THE REAR SEAT

The car's rear seats have different setting options for optimum seating comfort.

Adjust the backrest rake by adjusting the control forward/backward.

Raise/lower the seat by means of adjusting the rear section of the control up/down. Move the seat forward/backward by adjusting the control forward/backward.

Raise/lower the seat cushion front edge by means of adjusting the front section of the control up/down.

Settings for massage, side support, lumbar support and seat cushion extension are linked to the multi-function control.

Only one movement (forward/back/up/down) can be made at a time. The seat can be adjusted for a period of time after unlocking the door without the car running. Seat adjustment can always be performed when the car is running. Adjustment can also be performed for a period of time after the car has been switched off.

The seats have overload protection which is triggered if a seat is blocked by an object. If this happens, remove the object and then operate the seat again.

To adjust the sleeping/comfort position, it may be necessary to first move the seat forward slightly.

OPERATING THE MULTI-FUNCTION CONTROL

Use the multi-function control to adjust lumbar support, side bolsters in the backrest, seat cushion length as well as massage settings. Settings made with the multi-function control are shown in the control display. The screen only shows the settings of one seat at a time.

1. Raise the control display manually.
2. Activate seat adjustment by turning or pressing the multi-function control in any direction. The seat settings view opens in the control display.
3. Select the desired function in the control display by tapping on the display or turning the multi-function control up/down.
4. Change the setting by pressing the control in the desired direction.

Massage



Tap on the screen button or select the function with the multi-function control to activate the massage function. It is not possible to use the massage function when the car is switched off.

The following setting options are available for massage:



On/Off: Choose between On or Off to activate/deactivate the massage function.

1

Programs 1-5: There are five preset massage programs. Choose between 1 (Swell), 2 (Tread), 3 (Advanced), 4 (Lumbar) and 5 (Shoulder).



Intensity: Choose between low, normal and high.



Speed: Choose between slow, normal and fast.

Side support



Tap on the screen button or select the function with the multi-function control to activate adjustment of side bolsters in the backrest.

- Press the front section of the seat button on the multi-function control to increase side support.
- Press the rear section of the seat button in order to reduce the side support.



Lumbar support



Tap on the screen button or select the function with the multi-function control to activate adjustment of lumbar support.

- Press the seat button up/down on the multi-function control to move the lumbar support up/down.
- Press the front section of the seat button to increase lumbar support.
- Press the rear section of the seat button in order to reduce the lumbar support.

Extending the seat cushion



Tap on the screen button or select the function with the multi-function control to activate adjustment of the seat cushion.

- Press the front section of the seat button on the multi-function control to extend the seat cushion.
- Press the rear section of the seat button in order to retract the seat cushion.



ADJUSTING THE FRONT PASSENGER SEAT FROM THE REAR SEAT

The front passenger seat can be adjusted from the rear seat for longitudinal position and the backrest rake can be changed. Use the control display between the rear seats to change the settings of the front passenger seat.



1. Tap on the button in the display to adjust the front passenger seat from the rear seat.
2. A new view opens and the seat's longitudinal position and backrest rake can be adjusted.
3. Tap on the cross to return to the home view.

Adjusting the backrest rake

- Tap on the upper left-hand arrow to fold forward the backrest on the front passenger seat.
- Tap on the upper right-hand arrow to fold back the backrest on the front passenger seat.

Adjusting longitudinally

- Tap on the lower left-hand arrow to move the front passenger seat forward.
- Tap on the lower right-hand arrow to move the front passenger seat backward.



HEATED/VENTILATED SEATS

The seats can be heated in order to increase comfort when it is cold. The seat heater is controlled from the control display.



- Tap repeatedly on the button for the left or right-hand seat to change between the four levels: off, high, medium and low. The button shows the set level.

The seats can be ventilated, for example, to remove moisture from clothes. The seat ventilation is controlled from the control display.



- Tap repeatedly on the button for the left or right-hand seat to change between the four levels: off, high, medium and low. The button shows the set level.



IPAD HOLDER

There is a holder on the rear of the front seat's head restraint that fits most iPad models. Attach an iPad as follows:

1. Press down the tab and fold it forward against the head restraint to open the cover.
2. Slide the iPad into the holder and close the cover.

To detach the holder from its bracket, proceed as follows:

1. Depress the button on the underside of the fixed section.
2. Pull the holder back/up to detach it from the bracket.



MOUNTING POINTS FOR CHILD SEATS

The car is equipped with mounting points for child seats in the rear seat row.

The upper mounting points are primarily intended for use with front-facing child seats.

1. Slide the seat forward and fold the backrest forward in order to access the mounting point.
2. Always follow the manufacturer's mounting instructions for correct assembly.



FOLDING OUT THE TABLES

There are two tables under the armrest that can be folded out over the rear seats.

1. Fully open the armrest cover.
2. Lift the table up out of the armrest using the leather tab and swing the table out to a completely vertical position.
3. Fold down the table top across the seat.

Repeat the steps in reverse order to fold the tables back in.



COOLER BOX

There is a cooler box behind the armrest in the rear seat with space for two bottles and storage spaces for the crystal glasses.

- Press the button located above the cover to open the box.
- On the inside of the box there is a control for setting the temperature.

The cooling function is active when the car is running or when the car has been set to ignition position II.



HOT AND COLD DRINKS

There are two cup/glass holders in front of the armrest, as well as a heating/cooling holder for e.g. a bottle or tea/coffee mug.

- Press on the cover to open the holder. Heating or cooling is controlled from the control display. Blue LEDs indicate that cooling is active, red LEDs indicate that heating is active.

Heating or cooling is active when the car is running or when the car has been set to ignition position II.



- Tap repeatedly on the button in the control display to change between the three positions: off, cooling and heating. The button shows the set position.

USB PORT AND ELECTRICAL SOCKET LOCATIONS

USB ports: There are two USB ports under the armrest in the rear seat. The screen brackets on the rear of the front seat head restraints also include two USB ports. The ports can be used to e.g. charge a mobile phone or tablet.

It is not possible to playback media in the car's audio system via the USB ports.

Electrical sockets: There is one 12 V socket and one 230 V socket under the armrest in the rear seat.

230 V: The socket can be used for various accessories requiring a 230 V supply, such as chargers or laptop computers.

- Plug in the accessory's connector. Disconnect the accessory by unplugging the connector.

12 V: The socket can be used for various accessories requiring a 12 V supply, such as music players or mobile phones.

- Remove the cigarette lighter from the socket and plug in the accessory's connector. Unplug the accessory's connector and refit the cigarette lighter when the socket is not in use.

The car's electrical system must be in at least ignition position I for the USB ports and electrical sockets to supply power.





STORAGE SPACES

There are holders on the rear of the front seat head restraints for tablets.

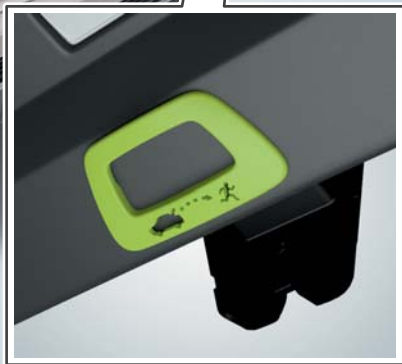
There is a storage space under the armrest between the seats.

There are ashtrays in the door sides.

There are storage compartments in the door sides.

There are storage pockets on the sides of the tunnel console.

There are storage pockets on the rear of the front seat backrests.



HANDLE IN THE CARGO AREA

The car is equipped with a self-illuminating handle¹ on the inside of the tailgate. It can be used to open the tailgate from the inside in an emergency situation.

- Pull down the handle to open the tailgate.

After use, the handle must be pressed back into its original position manually.

¹ Only applies to certain markets.

SPECIAL TEXTS

The owner's manual and other manuals contain safety instructions and all warning, important and note texts, which must be read. Some functions only apply to certain markets.

WARNING

Storage spaces

Keep loose objects such as mobile phones, cameras, remote controls for accessories, etc. in the glove compartment or other compartments. Otherwise these could cause injury to occupants in the car in the event of sudden braking or a collision.

Hot and cold drinks

Store bottles, Thermos flasks, glasses and mugs in the holders or in the cooler box while driving.

Heated rear seats

Heated seats must not be used by people who find it difficult to perceive an increase in temperature due to a lack of sensation or who otherwise have problems operating the controls for the heated seats. Otherwise, they may suffer a burn injury.

Mounting points for child seats

The child seat's upper straps must be routed through the hole in the head restraint leg before they are tensioned at the mounting point. If this is not possible, follow the recommendations from the seat manufacturer.

Handle in the cargo area

Make sure you keep the doors and tailgate locked and keep the keys out of the reach of children. Unsupervised children can lock themselves in and risk injury.

On hot days the temperature inside the car can rise quickly and exposure to the high temperature can lead to serious injury and death. Small children are particularly susceptible.

IMPORTANT

Navigating in the control display

Do not use sharp objects on the screen as they may scratch it.

Ventilated rear seats

The seat ventilation cannot be started if the passenger compartment temperature is too low. This to avoid making it too cold for the seat occupant.

iPad holder

An iPad should have protective plastic on the screen when it is fitted in the iPad holder. This is to avoid broken glass in the event of a collision.

Fuses

Always replace a blown fuse with one that has the same colour and amperage designation. Never fit a fuse with a higher value than that indicated in the table in the owner's manual.

If an electrical component is not working then it may be due to the fuse blowing caused by a temporary overload. For information on fuses, see the normal owner's manual for the car.

Power output

The 12 V socket has a maximum power output of 120 W and the 230 V socket has 150 W.

NOTE

Cooler box

The cooler box needs to have free circulation of air for optimum function. For this reason, you should leave at least 5 cm of space at the air intake for the cooler box in the cargo area.

The temperature setting may need to be adjusted depending on the ambient temperature. The maximum position is recommended to quickly lower the temperature.

Due to negative temperature in the bottom of the refrigerator for faster cooling, condensation may arise that sometimes needs to be wiped away. For optimum drying/cleaning, you need to remove the transparent bottle holder.

Heated rear seats

Heating of the rear seat is deactivated automatically after 15 minutes.

Ventilated rear seats

The seat ventilation should be used carefully

by people sensitive to draughts. A low level is recommended for long-term use.

V O L V O

